

# City Recovery & Renewal


---

HEALTH & WELLBEING BOARD.



# Aim of the programme

---

- Develop a co-ordinated programme to guide the **city** and the **council** out of the emergency response phase of the pandemic towards post-pandemic recovery and renewal
  - Return to normality where required and embrace the opportunities of this unprecedented situation where they present themselves
  - Considering recovery alongside local outbreak control
  - Take a multi-agency, partnership approach that harnesses the expertise and resources of those best placed to provide them
- 

# Overarching principles

---

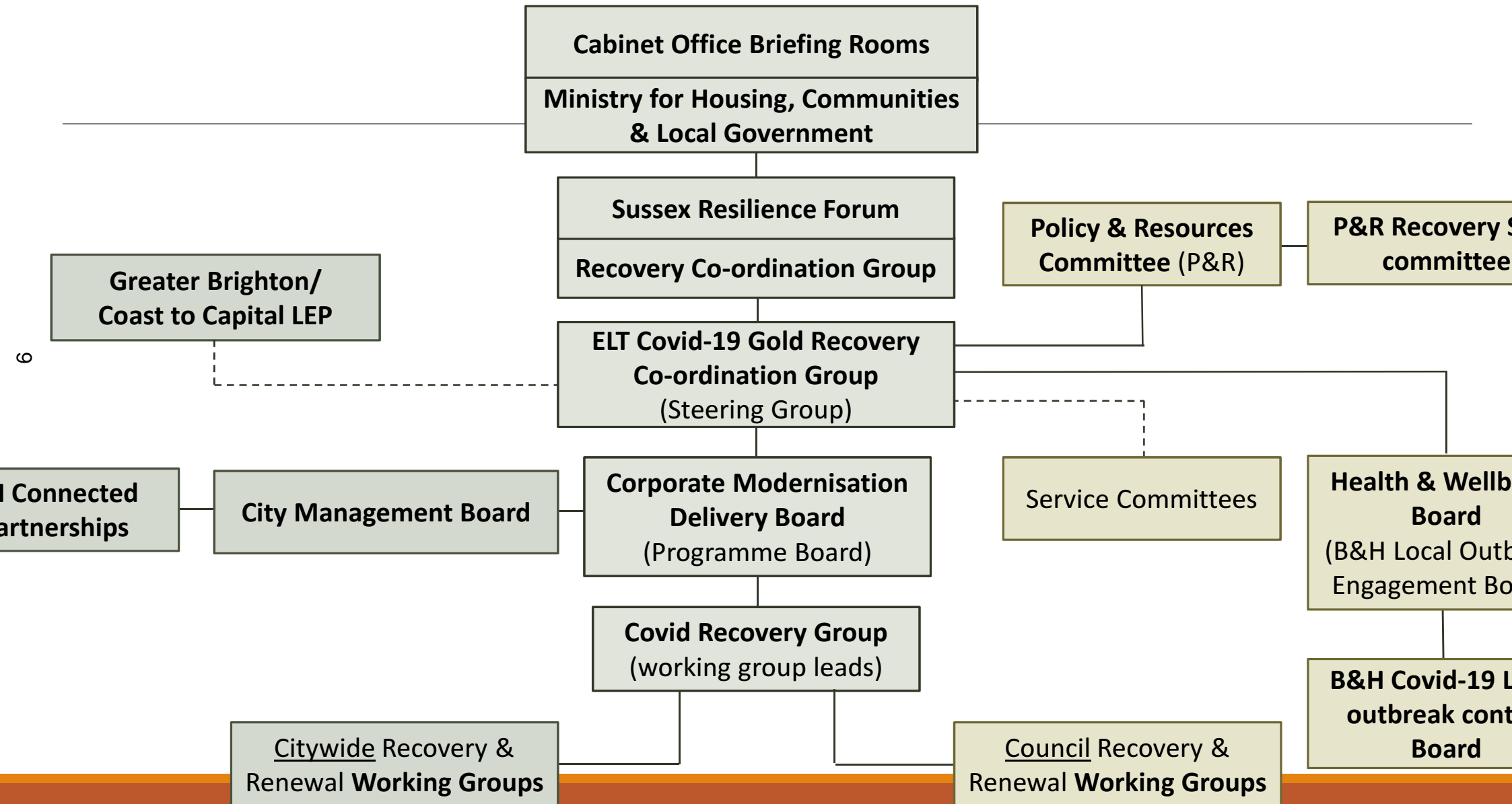
- Recovery is a planned process and managed as a programme
- Collaborating across service and organisational boundaries
- Building upon relationships developed in the emergency response phase
- Risks and capacity issues are surfaced early on
- Work is prioritised and tough decisions are taken
- Ideas are welcomed and opportunities are seized
- Response is targeted and agile and aligned with local outbreak control
- The work informs refreshed corporate strategies and business plans

# Scenario planning

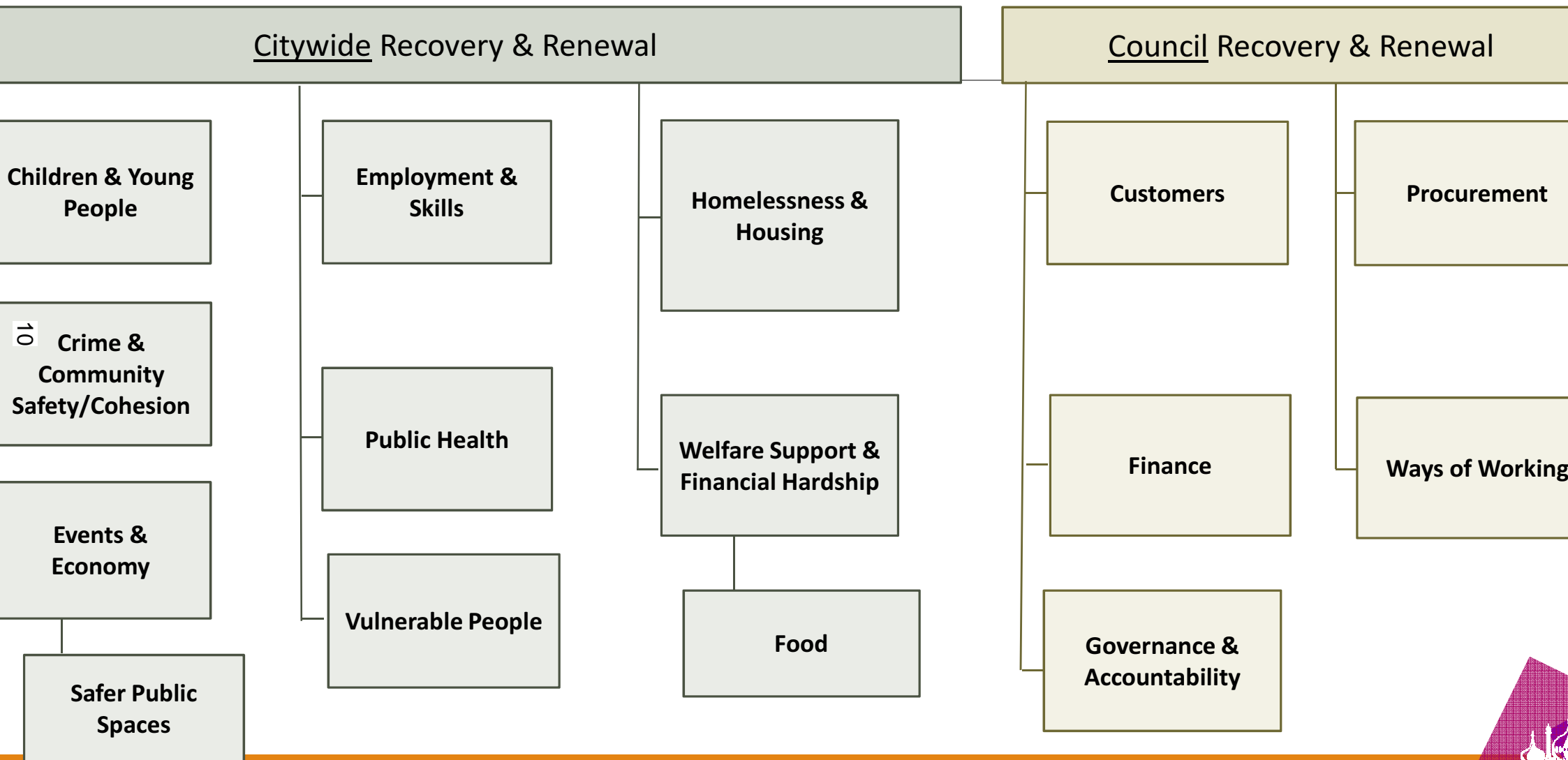
---

- Operating in a disruptive and unprecedented environment
- Uncertainty should not prevent us from making a start on recovery
- Planning based upon two or three possible future scenarios, including consideration of Brexit
- Planning will be informed by the best available expertise, which will shift and be refined over the coming weeks and months
- The Recovery & Renewal Programme will move the council and city forward, and create resilience to any future local outbreaks

# Recovery & Renewal governance structure




# Recovery & Renewal Programme scope



# Restart – supporting the easing of lockdown

---

- Business support grants and rent reliefs
  - Lifting on restrictions on travel to the city – late May
  - Reopening of retail – 15 June
  - 11 ■ Reopening of hospitality – 04 July
  - Phased reopening of museums and leisure centres – Mid July / Aug
  - Re-thinking office and public spaces
  - Winter Planning and Brexit
  - Longer term recovery – embedding health & well being
- 

# Safer Public Spaces



Road stickers near the hospital and along the Undercliff



Variable message signing along the seafront



Road signs for temporary changes



Vehicle activated speed signs



# Tranche 1 key achievements so far

## Cycling

8 km of segregated cycle lanes provided so far to support Active Travel



**‘Put simply, the bike lanes in both directions are fantastic. It is the first time I have ever felt safe cycling along this road.’**

Local resident

## Case study – Old Shoreham Road cycle lane

- 61% increase in the number of cyclists (from 339 per day to 545 per day)
- Reduction in the average speed of traffic by 1 mph. This equates to a potential fall in the accident rate by approximately 6%\*

\*Based on studies carried out by the Transport Research Laboratory on behalf of DfT (Taylor et al (2002) ‘TRL Report 421: The Effects of Drivers Speed on the Frequency of Road Accidents’) <https://trl.co.uk/reports/TRL421>

## Walking

1 km of widened footways to create more space for Active Travel whilst physically distancing

## Case study – Old Town pedestrian improvements

- 250m of pavement widening to support social distancing
- 10 streets closed to through traffic



# Tranche 2 key features

## Vision for Brighton & Hove:

An ambitious network of **strategic Active Travel Corridors** across the city, providing **meaningful reallocation of road space to cyclists and pedestrians**, based on a **strong track record of delivering improvements**, to assist the city in **moving forward with Covid-19 recovery**



**Walking and cycling improvements to 20 junctions**



**15 km of segregated cycle lanes proposed**



**Park Active to encourage sustainable journeys**



**BetterPoints – promotion and incentivisation of sustainable journeys**



**Avoid overcrowding and support & replace public transport use**



**Working with key schools and employers**

# Recovery – next steps

---

- Recovery will only happen if there is local outbreak control
- Working at regional level where appropriate
- Focus on community as well as economic recovery
- Employment & Skills
- Resilience – climate change / health & well being
- *A city that embraces healthy, active, sustainable living*

